



**Year 7 uniform guide and information on how to
place your uniform order for September 2020
entry.**

“At Devonport High School for Boys we believe that a smart, tidy and business like appearance is very important for all our pupils. It is our view that a sloppy appearance is the sign of a casual approach and we would like all our pupils and parents to appreciate the part that uniform plays in contributing to the ethos and reputation of a school. We also want our pupils to be ready for the expectation of future employers and the world of work. This is why the wearing of school uniform is compulsory and why we expect all pupils to adhere to our rules.”

School Uniform list

Single-breasted bottle green blazer embroidered with the school badge.	Compulsory	Available from our Uniform shop. (Also available from The Schoolwear Shop and Trutex Uniform Shop in Plymouth.)
House school tie.	Compulsory	Available from our Uniform shop only.
White shirt. Long or short sleeved.	Compulsory	Widely available.
Charcoal grey trousers of a traditional design (not skinny trousers, jeans or trousers with pockets on the legs).	Compulsory	Widely available.
Plain, dark-coloured socks.	Compulsory	Widely available.
Black polishable shoes (not trainers, boots, skate shoes or shoes designed for leisure wear).	Compulsory	Widely available.
Charcoal grey V-necked jumper (to be worn with the blazer).	Optional	Available from our Uniform shop.

Please pay particular note to the style of shoe and trousers that are part of DHSB's uniform as some shops (mainly sports shops) sell items in school uniform sections that are not permissible at this school. Only official DHSB school badges are permitted.

Please make yourself aware of the rules and expectations on the following page. These standards must be strictly adhered to by all students.

All students are expected to wear their uniform correctly and with pride. Ties must be worn at a suitable length with the top shirt button done up and the shirt tucked in. All items of clothing must be clearly marked with the owner's name – please check regularly that the name is still visible.

The school cannot accept any responsibility for loss of property or injury incurred by students having inappropriate dress or footwear.

Students not wearing correct uniform may be removed from lessons at the discretion of Senior staff until the uniform issue is rectified, usually by the correct item being brought in to school for them.

► **Blazers** – The school blazer is to be worn at all times, unless permission is given for it to be removed. We discourage students from wearing any non-uniform clothing such as coats* sweatshirts, hoodies, etc. and if these are worn they must be removed upon entry to the school buildings. *weather permitting.

► **Trousers** – Trousers must be charcoal grey, traditional/ formal style tailored school trousers. Other styles such as skinny trousers, jeans or trousers with pockets on the legs are not permitted. Please ensure that trousers conform to the style required before purchasing. If a belt is worn it should be plain black.

► **Collared Shirt and Tie** – Shirts must be worn tucked in with all the buttons done up right up to the neck underneath the House School tie, which must be tied appropriately.

► **Jumpers** – The school's charcoal grey jumper is an optional item that may be worn in addition to the school blazer. Jumpers not purchased from the school shop are permitted but they must be charcoal grey, V-necked (so that the school tie is visible) and of a tight knit appearance. Round neck jumpers or cardigans are not permitted.

► **Shoes** - Shoes must be wholly black, with no white or coloured markings whatsoever and any laces must be black. They must be leather-look/polishable. Trainers, boots, skate shoes, shoes designed for leisure wear, suede or canvas shoes are not permitted.

► **Face and Head Coverings** - For reasons of security and health and safety, no hats, helmets or hoods should be worn in the school buildings (unless with permission of the Head Teacher). Turbans may be worn on religious grounds only and should be black or bottle green in colour.

► **Jewellery** – Jewellery and piercings are not permitted.

► **Hair** - If longer than collar length, hair must be tied back in situations where it could cause a danger to the individual or others, such as in PE and other practical lessons. Extreme fashion hairstyles and colours are not allowed. Hair must be natural colours only.

► **Specialist Clothing** - Some subjects will require specialist clothing, such as aprons, laboratory coats and goggles. Students are to wear the required specialist clothing when directed by staff.

Shoe guide

Shoes must be wholly black, with no white or coloured markings whatsoever and any laces must be black. They must be leather-look/polishable. Trainers, boots, skate shoes, shoes designed for leisure wear, suede or canvas shoes are not permitted.

Please use this guide when purchasing school shoes.

Examples of acceptable styles (not an exhaustive list):



Examples of unacceptable styles (not an exhaustive list):



Sports kit

House Rugby shirt or House training shirt	Compulsory	*Available from our Uniform shop.
Aztec shorts or Rugby shorts	Compulsory	*Available from our Uniform shop.
Long socks	Compulsory	*Available from our Uniform shop.
Mouthguard for Rugby and Hockey	Compulsory	*Available from our Uniform shop / widely available.
Shinpads for Football	Compulsory	Widely available.

Hoody	Optional	*Available from our Uniform shop.
Rain jacket	Optional	*Available from our Uniform shop.
Training top	Optional	*Available from our Uniform shop.
Tracksuit trousers (Skinny "Durham" or Regular "Kiwi" fit)	Optional	*Available from our Uniform shop.
Base layer	Optional	*Available from our Uniform shop.
Beanie / Bobble hat	Optional	*Available from our Uniform shop.
DHSB Sports bag	Optional	*Available from our Uniform shop.
Boot bag	Optional	*Available from our Uniform shop.

The school's official sports kit manufacturer is O'Neills. Only official DHSB badged/branded sports kit made by O'Neills are permitted to be worn in sports lessons or when representing the school at sports fixtures & competitions.



The only Long socks permitted to be worn are the school's black with grey hoops socks made by O'Neills. For indoor or summer sports white short sports socks may be worn.

Pupils may wear baselayers underneath their sports kit which can be of any brand however they must be black.

All items of kit **must** be clearly marked with the owner's name and students must take responsibility for ensuring that they leave the changing rooms with all of their belongings.

** All items of sports kit are available to order from the Uniform shop on Wisepay at the start of Year 7 as per this guide. After this initial order any future items required are to be ordered directly from O'Neills. Details of this on the last page of this guide.*

Guidance on footwear requirements for school sport facilities

Creekside 3G Artificial Grass Pitch

It is important for safety that shoes worn on the 3G Pitch have suitable grip on the surface to avoid unnecessary slipping. To protect & maintain the high quality playing surface, approved footwear must be worn at all times to minimise the risk of damage.

The only footwear permitted on the 3G Pitch are:

- Football boots with round plastic/rubber moulded studs (No metal studs or blades). Boots specifically designed for artificial grass (usually labelled as "AG") offer the best performance.
- Astroturf trainers (with a dimpled sole).
- Trainers with suitable grip (Astroturf trainers are safer).

No metal studs, blades of any material or spikes may be worn on the pitch. All footwear must be clean and free of mud and grass before going on to the 3G pitch to avoid contamination of the surface. Any pupil with incorrect footwear will not be able to participate in activities taking place on the 3G pitch.

Examples of suitable footwear for the 3G pitch



Football boots with round plastic moulded studs



Astroturf Trainer (rubber sole with dimpled profile)

Watergate Hockey Pitch

It is important for safety that shoes worn on the Hockey pitch have suitable grip on the surface to avoid unnecessary slipping. To protect & maintain the high quality playing surface, approved footwear must be worn at all times to minimise the risk of damage.

The only footwear permitted on the Hockey pitch are:

- Astroturf trainers (with a dimpled sole).
- Trainers with suitable grip (Astroturf trainers are safer).

No footwear with studs, blades or spikes may be worn on the Hockey pitch. All footwear must be clean and free of mud and grass before going on to the pitch to avoid contamination of the surface. Any pupil with incorrect footwear will not be able to participate in activities taking place on the Hockey pitch.

Example of suitable footwear for the Hockey pitch



Astroturf Trainer (rubber sole with dimpled profile)

Other Footwear required for Sport

- Indoor Sports – Trainers with a non-marking sole.
- Outdoor Sports on natural grass pitches – Football / Rugby boots with studs.

Sports footwear may be any colour.

How to place your uniform order

Unfortunately due to Covid-19 the school has not been able to run our usual Year 7 Uniform Sale event. Instead of this we will be taking online uniform orders using our Wisepay payment system. To place your uniform order please follow the steps below.

The deadline for placing orders is 17 July 2020.

You will have been issued with Wisepay login details for your son's account. Login to your Wisepay account: <https://www.wisepay.co.uk/schools/devon/Devonport/wisepay.htm> and click on the "Uniform Shop" section. Then select "Year 7 uniform". You will then be presented with all the uniform items that are available for purchase from the school. You will have been told which house (form group) your son is in.

Please use the information in this guide to assist you with your uniform selections and sizings for items available to order from the school's Uniform shop. We appreciate that it is difficult making choices without seeing the items first hand so to offer some additional guidance look out for the items marked with a ★ as these are our highest selling items each year.

Your son will receive your order on his first day in school. Your order will be packaged and students will be advised not to open it in school and to take it home to a parent/carer.

On their first day students are asked to attend school in shirt and trousers (as blazers and ties will be part of the order they will receive on their first day). With this in mind uniform requirements will be temporarily relaxed at the start of term to allow time for any size exchanges to be made.

If you do wish to exchange an item instructions will be included in your order package on how to do this. Any item must be returned within 28 days in un-worn, brand new condition with all labels/tags still attached.

You will have been told which house (form group) your son is in. Some items like the House tie, House training shirt and House Rugby shirt are all specific to each house so please make sure you select the correct house for your son when placing your order.

House colours:

Campbell	Edison	Newton	Priestley	Smeaton	Winstanley
Orange	Green	Purple	Yellow	Blue	Red

Compulsory items of uniform



★ Green blazer
£35 / £40



★ House tie
£6.50

Optional item of uniform



School charcoal jumper with embroidered badge
£15.50 / £17 / £19

Blazer measuring guide

How to measure your chest

Measure around the fullest part of the chest, making sure that the tape is level under the arms and across the shoulder blades. Make sure you are relaxed when measuring to get a true measurement. If you measure as 30" (or 76cm) then your blazer size will be a size 30". Our blazers are true to size, so no need to order up a size to accommodate clothing underneath.

Find the correct length

Measure from the top of the shoulder (highest point) to where you feel the blazer would sit when worn.

How to measure the sleeve length

Start from the shoulder point to where the sleeve would normally fit.



TO FIT CHEST (Inches)	26"	28"	30"	32"	34"	36"	38"	40"	42"	44"
Chest (cm)	66	71	76	79	86.5	91.5	96.5	102	107	112
Sleeve (Crown to cuff)	47.5	52	56.5	58.5	62	63.5	65	65.5	66	66.5
Length (cm)	54	59	64	66.5	73	75	77	78.5	79.5	80

School jumpers

In our experience students require one or two sizes up from their blazer size as the jumpers are quite slim fitting, ie. If you are ordering a 30" blazer we would recommend ordering a 32" or 34" jumper.

Compulsory items of sports kit



or



★ House training shirt
£20 / £22.50

House Rugby shirt
£35 / £39.50



or



★ Aztec shorts
£8 / £10

Rugby shorts
£18 / £22

The shirts and shorts can be mix and matched with each other.



★ Sports socks
£8 / £9



Opro Silver mouthguard
(A mouthguard can be purchased
from elsewhere)
£11

Optional items



★ Half zip training top
£25 / £33



★ Hoody
£25 / £33



Rain jacket
£25 / £30



★ Durham skinny track trousers
£26.50 / £32.50



Kiwi regular track trousers
£22 / £28



Baselayer
£19 / £22



★ DHSB sports bag
£32



Boot bag
£11



Beanie hat
£7

O'Neills sports kit size guide



1 - CHEST - Measure the circumference of the chest 2.5cm below the underarm.

2 - WAIST - Measure the circumference at the narrowest part of the waist.

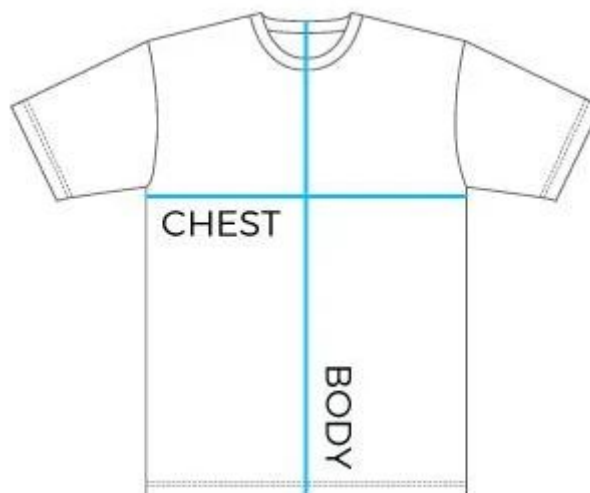
SIZE	1 - CHEST		2 - WAIST	
	<i>inch</i>	<i>cm</i>	<i>inch</i>	<i>cm</i>
9/10	29-30"	74-76	24-25"	61-64
10/11	31-32"	79-81	26-27"	66-69
13	34-36"	86-91	28-29"	71-74
XS*	36-37"	91-94	30-31"	76-78
S	37-38"	94-96.5	31-32"	78-81
M	39-40"	99-101.5	33-34"	83-86
L	41-42"	104-107	35-36"	88-91.5
XL	43-44"	109-112	38-40"	96.5-102
2XL	45-46"	114-117	42-44"	106.5-111

*XS size is only available in the House training shirt, House Rugby shirt and Kiwi tracksuit trousers.

Additional help with sizing

As everyone is different in how they like a garment to fit or if you want to buy with additional growing room the table below may also help you with selecting the correct size below. This table shows the actual garment measurements of the House training shirts and Rugby shirts which were taken from the sample sizes we hold in the Uniform shop.

If you have a T-shirt or sports shirt that fits your son well it could be worth measuring the dimensions of his shirt as show in this diagram and comparing it to the sizes below to help you make an informed size choice.



The size required for a House training shirt or Rugby shirt is then a good starting point for any of the outerwear garments.

Training / Rugby shirt actual measurements	CHEST	BODY
SIZE	cm	cm
9/10	42	56
10/11	46	60
13	48	66
XS*	49	70
S	51.5	72
M	54.5	75.5
L	58	77
XL	59	78

★ DHSB sports bag

The sports bag comes personalised with your son's initial(s) and surname eg. J.R. SMITH. When ordering this item on Wisepay please make sure that you complete the box with the name to be printed on the bag and double check the spelling as we can't correct mistakes once the bags are printed.

We do not print first names or nicknames on the bags, just initial(s) and surname.

NB. As this item is a personalised item it is non refundable.



Purchasing any Uniform and Sports kit items after you initial order at the start of Year 7

During more normal times the school's Uniform shop is open every Friday during term time during lunchtime (13:35-14:20) for the purchase of uniform or for trying items on for size. If you are unable to attend during this time please email shop@dhsb.org to make an appointment.

The Uniform shop can accept payment by cash, credit/debit card in person or payments made by credit or debit card via Wisepay.

School Uniform

School Uniform can be ordered and purchased by credit or debit card via our Wisepay online Uniform shop.

<https://www.wisepay.co.uk/schools/devon/Devonport/wisepay.htm>

During term time, items ordered by 10:00am each Friday should be sent out to your son in school by the following Monday. If items are out of stock, we will advise you of the estimated date that they will become available.

The Uniform shop can be contacted by email on: shop@dhsb.org

If you need to return or exchange an item purchased from the Uniform Shop please return it to the Uniform shop or Reception within 28 day of receipt including details of if you require an exchange or refund. Any item must be returned in un-worn, brand new condition with all labels/tags still attached.

Sports Kit

For any future orders of sports kit you require please purchase these direct from the O'Neills online shop for DHSB. Go to www.oneills.com , select "Clubs & Education" at the top of the page, then "Schools" and then find the Devonport High School for Boys section or click on the link below.

https://www.oneills.com/uk_en/shop-by-team/education/schools/devonport-high-school-for-boys.html

Please be aware that O'Neills operate a no returns or exchanges policy as all of our items are made to order for you. The Uniform Shop holds sample sizes for all of the O'Neills garments available so it is recommended that your son tries on items to find the size required in the Uniform shop prior to placing your order with O'Neills. The Uniform shop is separate to O'Neills and cannot accept any returns or exchanges of O'Neills items.